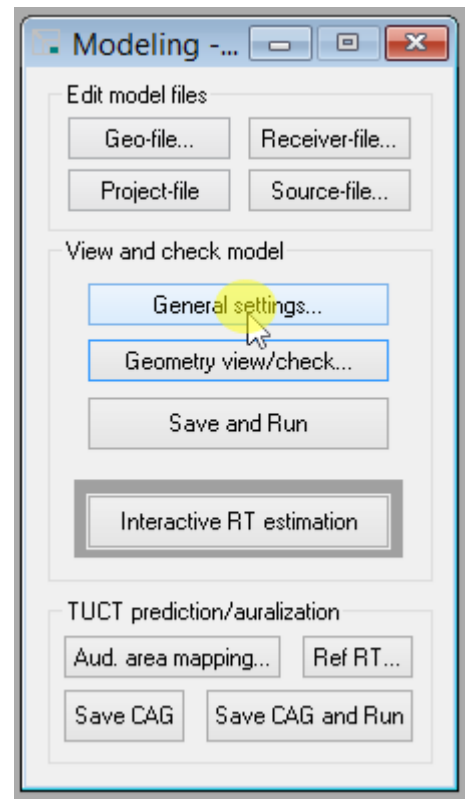
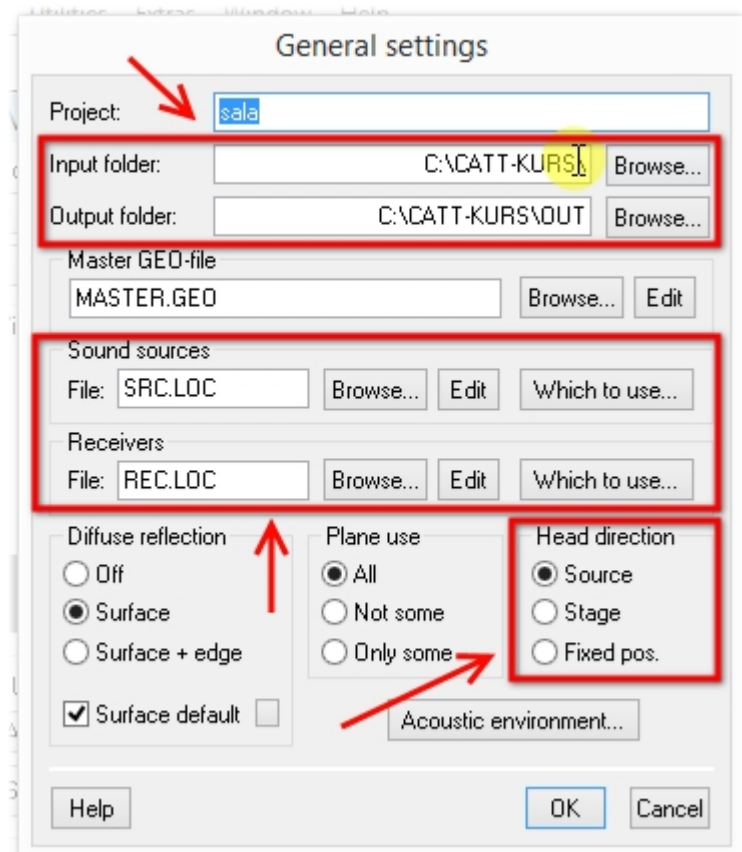


Project settings

The settings of a project can be changed in **General settings** in the **View and check model** section of the **Modeling** window.



It is worthwhile to take a look at the three marked sections of the settings window:



1 - Here one can change the path of the project's folder and the OUT folder, in which the simulations' results will be generated

2 - By using the **Which to use** one can choose the receivers and sound sources used in the simulation

3 - **Head direction** section describes the way in which the sound receivers are „turned“:

- **Source** - towards the source (only works for a single source!)
- **Stage** - to the beginning of the coordinate system
- **Fixed pos.** - towards a point with fixed coordinates

Furthermore, in **Acoustic environment** one can change the temperature, density, humidity, et cetera, of the air filling the model.

Changing the project's path to .\ and the output folder's to .\OUT might be a good idea - it allows for its successful loading regardless of where on the disc it has been placed.

General settings

Project: sala

Input folder: .\ Browse...

Output folder: .\OUT Browse...

Master GEO-file

MASTER.GEO Browse... Edit

Sound sources

File: SRC.LOC Browse... Edit Which to use...

Receivers

File: REC.LOC Browse... Edit Which to use...

Diffuse reflection

☐ Off

☒ Surface

☐ Surface + edge

☒ Surface default ☐

Plane use

☒ All

☐ Not some

☐ Only some

Head direction

☒ Source

☐ Stage

☐ Fixed pos.

Acoustic environment...

Help OK Cancel